

Name of Project
Brindley Point

Client
Redrow Homes

Architect
Weedon Partnership

Structural Engineer
Simpson Associates

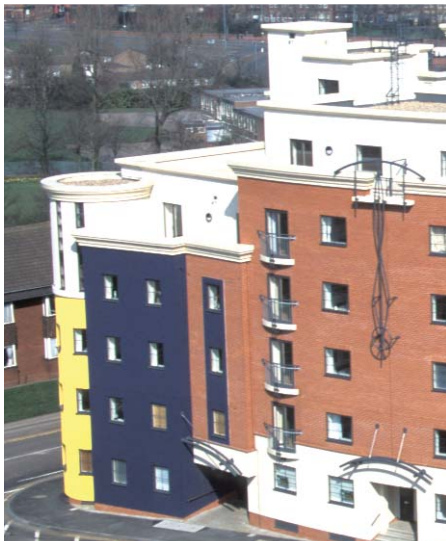
Services Engineer
Mendick Waring London

Quantity Surveyor
Bruce Shaw Partnership London

Contract Value
£4.5 million

Contract Period
May 00 - Sept 01

Main Contractor
Carillion Building



Brindley Point is a development of 58 one and two bedroom apartments situated in Birmingham's Convention Quarter. Work commenced on this traditionally procured 68-week contract in May 2000 and was successfully completed in the autumn of 2001.

The building was constructed around a four storey concrete frame and incorporates balconies or terraces for most apartments, with a central landscaped interior courtyard.

Building adjacent to Birmingham's busy convention centre, significant consideration was given to the careful scheduling of materials deliveries, the storage and handling of materials around the site and due regard to our neighbours and those making use of the convention centre's facilities.